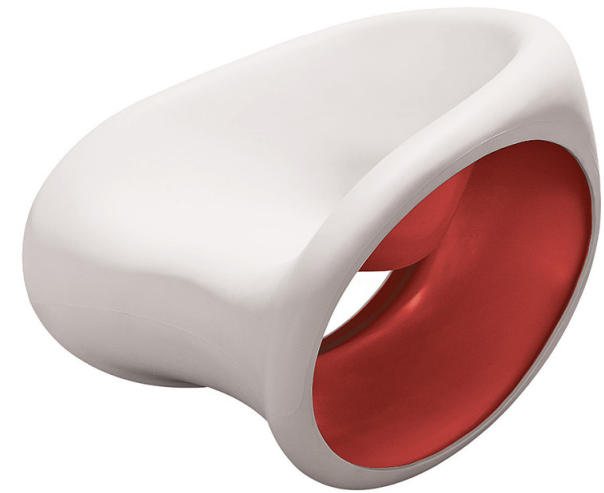


MT3

Ron Arad

“MT”, the acronym for these pieces designed by Ron Arad, is pronounced “empty” in English, and emptiness is truly the characterizing element of this project. The volume is hollowed out and provocatively presents its interior, finished in two colors. This is possible thanks to a double step in the rotational plastic production. First, polyethylene in the color of the external body is placed in the mold. Once this layer has formed, the second color is inserted and made to adhere to the first without the two polymers melting in the process, which takes place in blast furnaces. Once extracted, a five-axis laser will cut the lateral ends and reveal the two-tone MT. From a typological point of view, it is also worth noting the presence of a rocking chair, extremely rare in contemporary times.



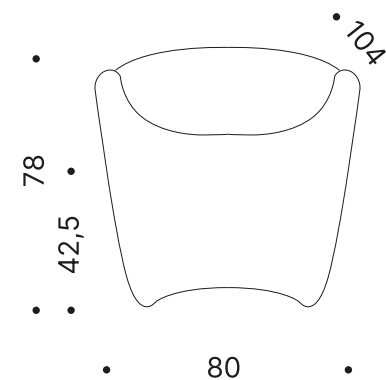
BIANCO SABBIA, ROSSO

SPECIFICHE TECNICHE

Altezza	78 cm
Larghezza	80 cm
Profondità	104 cm
Altezza seduta	42.5 cm

SKU

D44271N278131



BIANCO, SABBIA, NERO

SPECIFICHE TECNICHE

Altezza	78 cm
Larghezza	80 cm
Profondità	104 cm
Altezza seduta	42.5 cm

SKU

D44271N278132

